


## Human IL-23 p19 Protein, His tag (Animal-Free)

Cat #: PRP1909

Size: 5 µg/20 µg/100 µg/1 mg

### Product Information

	<b>Product Name:</b> Human IL-23 p19 Protein, His tag (Animal-Free)		
<b>REF</b>	<b>Catalog Number:</b> PRP1909	<b>LOT</b>	<b>Lot Number:</b> Refer to product label
	<b>Purity:</b> > 95 % as determined by SDS-PAGE		
	<b>Storage:</b> Store at -20°C		<b>Preparation method:</b> E.coli
	<b>Shipping:</b> The product is shipped at ambient temperature.		

**Background:** Interleukin 23 (IL-23) is a heterodimeric cytokine composed of two disulfide-linked subunits, a p19 subunit that is unique to IL-23, and a p40 subunit that is shared with IL-12. The p19 subunit has homology to the p35 subunit of IL-12, as well as to other single chain cytokines such as IL-6 and IL-11. The p40 subunit is homologous to the extracellular domains of the hematopoietic cytokine receptors. Although p19 is expressed by activated macrophages, dendritic cells, T cells, and endothelial cells, only activated macrophages and dendritic cells express p40 concurrently to produce IL-23. IL-23 has biological activities that are similar to, but distinct from IL-12. Both IL-12 and IL-23 induce proliferation and IFN-gamma production by human T cells. While IL-12 acts on both naive and memory human T cells, the effects of IL-23 is restricted to memory T cells.

**Sequence:** Amino acid sequence derived from Human IL-23 p19 (Arg20-Pro189) (Q9NPF7) was expressed with 6×His tag at the N-terminus.

**Protein length:** The recombinant Human IL-23 p19 Protein consists of 170 amino acids and predicts a molecular mass of 18.7 kDa.

**Biological Activity:** Measured by its ability to induce IL-17 secretion in mouse splenocytes. The ED<sub>50</sub> for this effect is <0.5 ng/mL.

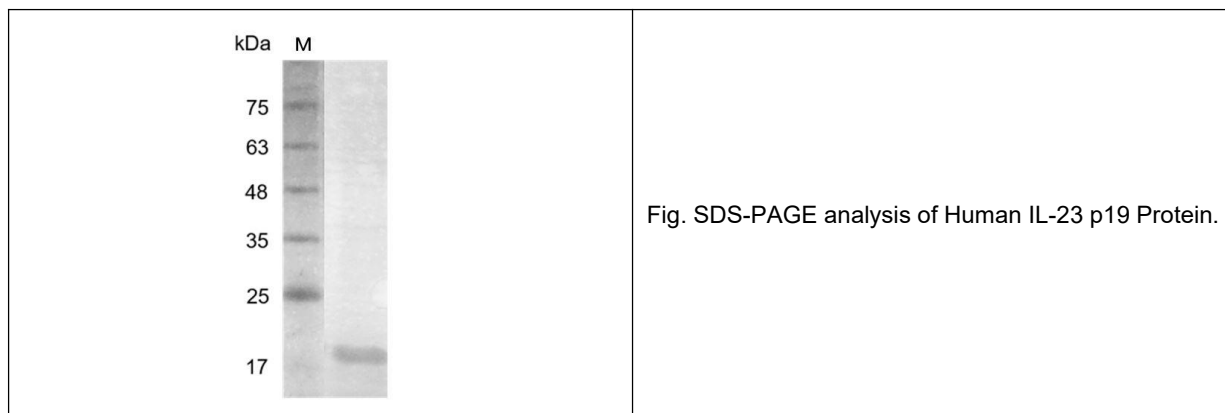
**Endotoxin:** <0.1 EU per µg of the protein by the LAL method.

**Formulation:** Lyophilized from sterile PBS, pH 8.0.

**Storage Instructions:** Lyophilized protein product should be stored desiccated below -18°C. Upon reconstitution, the protein should be stored at 4°C between 2-7 days and for future use below -18°C. For long term storage it is recommended to add a

carrier protein (5% HSA , 10%FBS or 0.1%BSA). Please prevent freeze-thaw cycles.

**Usage notes:** Always centrifuge tubes before opening. It is recommended to reconstitute the lyophilized recombinant protein to a concentration of 0.1-1 mg/mL using the buffer we provided, and keep at room temperature for at least 20 min to fully dissolve. Please avoid vortex vigorously.



**Note:** The product listed herein is for research use only and is not intended for use in human or clinical diagnosis. Suggested applications of our products are not recommendations to use our products in violation of any patent or as a license. We cannot be responsible for patent infringements or other violations that may occur with the use of this product.